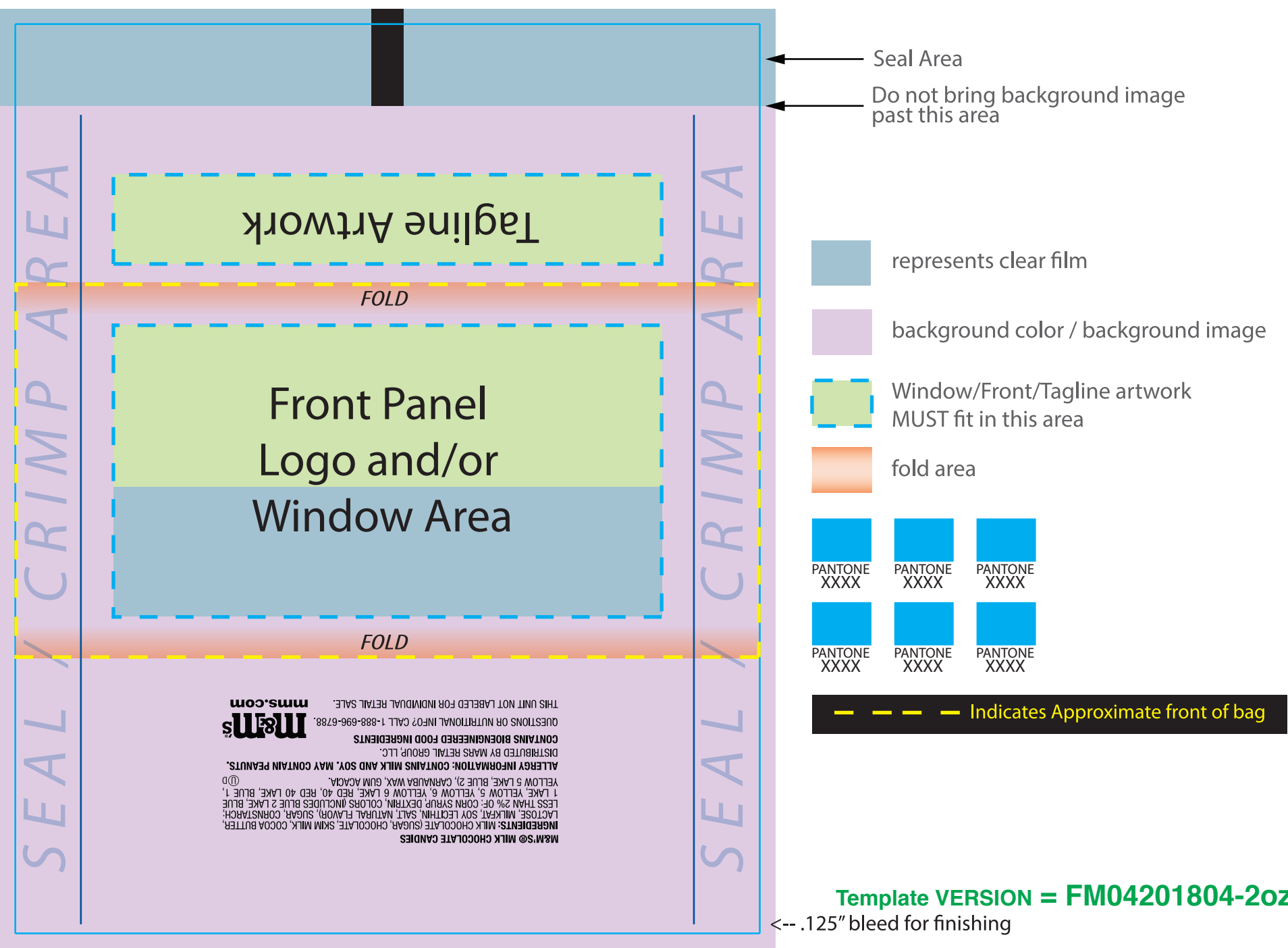


Date: XX.XX.20XX  
VERSION = 1

DIELINE = 5.73" x 7.00"



FRONT BAG



BACK BAG



1. ALL FILES SHOULD BE SAVED AS A .PDF PRESERVING ILLUSTRATOR EDITING CAPABILITIES ☒
2. Please use all VECTOR graphics. If a raster image is placed on a window, it must contain clipping paths around the shape.
3. Maintaining the integrity of the layout, page size and layering structure while modifying this document is crucial.
4. DO NOT SAVE AS AN .EPS FILE.
5. All fonts must be outlined.
6. All images placed in the customer creation template must be embedded in the file.
7. Other than standard CMYK process colors, the color library we use is Pantone Solid Coated (i.e., Pantone 400 C).
8. If a Pantone is used in an object on the bag artwork, it must be converted to Pantone Solid Coated before submitting. We cannot convert color libraries for the customer.
9. Do not bring front panel artwork to the fold lines, as they may display on back of the bag.

ADOBE PDF PRESET - ILLUSTRATOR DEFAULT